

What Does Monkeypox Infection Look Like?

Signs and symptoms usually develop 5-21 days after close contact with a person with monkeypox. People with monkeypox are considered infectious from the time that symptoms begin until the lesions have crusted. Symptoms may include the following:

- Fever and/or chills
- Headache, muscle or back ache, exhaustion
- Swollen lymph nodes

The lesions may look like the images below as they develop, crust over, and form scabs (from: “Monkeypox: background information”)



a) Early vesicle, 3mm diameter



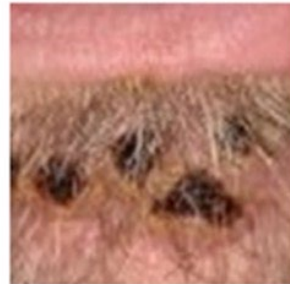
b) Small pustule, 2mm diameter



c) Umbilicated pustule, 3-4mm diameter



d) Ulcerated lesion 5mm diameter



e) Crusting of mature lesions



f) Partially removed scab

[More information: CDC: Monkeypox: Information for Clinicians](#)